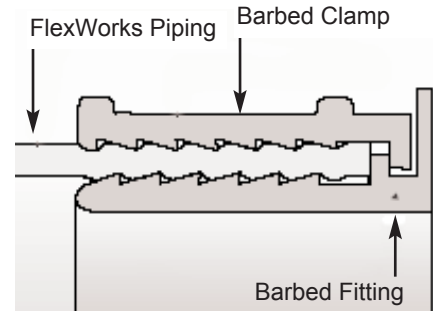


Introduction

OPW Fueling Containment Systems Barbed Fittings are designed to be used with FlexWorks piping and must be installed within a containment sump. When using FlexWorks double wall flexible piping, be sure to install test boots before connection piping to the fittings.

BEFORE INSTALLING:

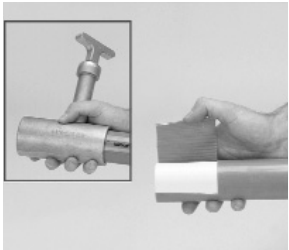
1. Read all instructions carefully.
2. Inspect barbed surfaces of fittings for loose debris or damage which may have occurred during shipping.
3. Refer to the FlexWorks Manual for additional information and testing procedures.



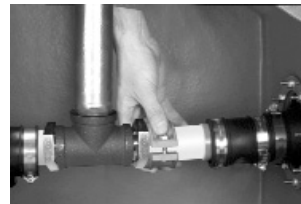
Step 1
Cut the FlexWorks pipe squarely to the desired length using the FlexWorks Pipe Cutter.



Step 5
Slide the pipe onto the barbed end of the fitting until the pipe stops against the fitting's interlock shoulder.



Step 2
If using FlexWorks double wall piping, cut the jacket back 3" using the FlexWorks Jacket Cutter. The stop pin should be in the position furthest from the opening.



Step 6
Position the clamp's interlock lip into the groove behind the barbed fitting's interlock shoulder.



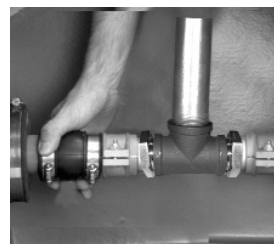
Step 3
Insert the piping into the sump through the entry boot. Place the test boot over the end of the pipe.



Step 7
Alternately tighten the clamp fasteners until the clamp segments meet, being sure to keep the clamp segments parallel to each other.



Step 4
Place the clamp assembly loosely onto the pipe end until the pipe touches the clamp's interlock lip.



Step 8
Position test boot with outlet port facing down. Clamp one side on the primary pipe and the other on the blue secondary jacket.

NOTE: RE-TIGHTEN CLAMP AFTER A PERIOD OF 24 HOURS TO INSURE PROPER SEALING

Notice: FlexWorks products must be used in compliance with applicable federal, state, and local laws and regulations. Product selection should be based on physical specifications and limitations and compatibility with the environment and material to be handled. OPW makes no warranty of fitness for a particular use. All illustrations and specifications in this literature are based on the latest production information available at the time of publication. Prices, materials, and specifications are subject to change at any time, and models may be discontinued at any time, in either case, without notice or obligation.

Product Warranty

OPW warrants that products sold by it are free from defects in materials and workmanship for a period of one year from the date of shipment by OPW. As the exclusive remedy under this limited warranty, FlexWorks by OPW, Inc., will at its sole discretion, repair, replace, or issue credit for future orders for any product that may prove defective within the one year period. This warranty shall not apply to any product that has been altered in any way, which has been repaired by any party other than a service representative authorized by OPW or when failure is due to misuse, conditions of use, or improper installation or maintenance. Neither OPW Fueling Containment Systems nor OPW shall in any instance have any liability whatsoever for special, incidental or consequential damages to any party and shall have no liability for the cost of labor, freight, excavation, clean up, downtime, removal, reinstallation, loss of profit, or any other cost or charges in excess of the amount of the original invoice for the products.

THIS WARRANTY IS IN LIEU OF ALL OTHER WARRANTIES, EXPRESS OR IMPLIED, AND SPECIFICALLY THE WARRANTIES OF MERCHANTABILITY AND FITNESS FOR A PARTICULAR PURPOSE. THERE ARE NO WARRANTIES WHICH EXTEND BEYOND THE DESCRIPTION ON THE FACE HEREOF.

IMPORTANT INFORMATION - FOLLOW ALL INSTRUCTIONS

Please contact your OPW-FCS sales representative or OPW-FCS customer service representative at 1-800-422-2525 for OPW-FCS products installation procedures. All OPW-FCS literature including installation instruction sheets and manuals can be accessed from the OPW-FCS website at: www.opwfcs.com.

The use of non-qualified personnel or any deviations from these recommended procedures could result in damage or leakage of the system.



OPW Fueling Containment Systems
3250 US 70 Business West
Smithfield, NC 27577
Customer Service: (800)-422-2525
Customer Service Fax: (800)-421-3297
Technical Questions: (919)-934-2786
Literature Requests: (919) 934-2786
www.opwfcs.com

