

# Installation Instructions

## Sump Mounting Flange (SMF)

**IMPORTANT:** Please read all warnings and follow the installation instructions completely and carefully. Failure to do so may cause product failure, or result in environmental contamination due to liquid leakage into the soil, creating hazardous spill conditions.

**WARNING - DANGER:** Using electrically operated equipment near gasoline or gasoline vapors may result in fire or explosion, causing personal injury and property damage. Be sure that the working area is free from such hazards, and always use proper precautions.

### Sump Mounting Flange

Sump Mounting Flanges are designed to provide a convenient means to mount FlexWorks Tank Sumps to the threaded bung fittings on Underground Storage Tanks (UST). Multiple Sump Mounting Flanges are required in high water table areas.

**NOTICE:** Manway mounting kits supplied by other manufacturers are not warranted by OPW. OPW bears no responsibility whatsoever for the integrity of joints using alternate tank sump mounting systems.

### Step #1 - (See Figure 1)

Screw the Sump Mounting Flanges into the appropriate tank bung fittings. Tighten with Spanner Wrench.

### Step #2 - (See Figure 2)

On the bottom of the sump, mark the location where the center of each mounting flange is to be installed. If multiple flanges are to be used, trace the bolt patterns to accurately transfer the hole locations and bolt alignment to the sump floor. Drill out the openings using the appropriate hole saw. Clean any rough edges with a razor knife.

**IMPORTANT:** The correct hole saw size must always be used for proper installation of Sump Mounting Flanges.

**WARNING:** Only use hole saws that are sharp and in good condition. Use caution when using hole saws to prevent injury if saw catches unexpectedly and rotates drill.

### Step #3 - See Figure 3

Clamp a Sump Mounting Flange compression ring around each hole in the sump bottom using clamps or channel locks. Make sure the bolt patterns are aligned correctly to match the flanges installed in the tank. Using the rings as templates, drill out the appropriate bolt hole circles using a 9/16" drill bit. Clean any rough edges with a razor knife.

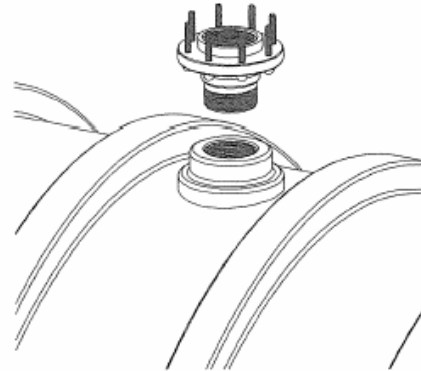


Figure 1

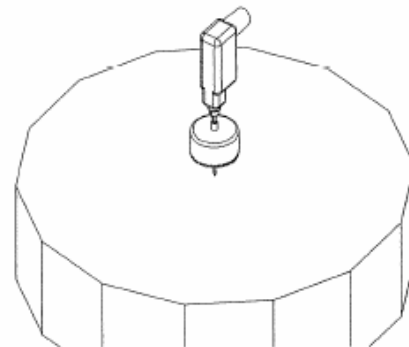


Figure 2

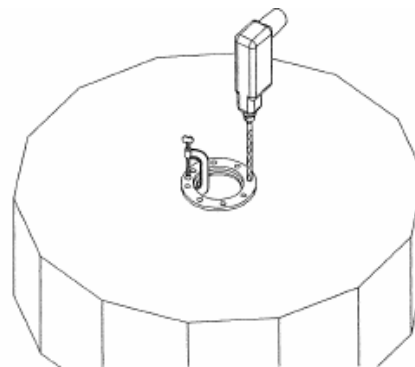


Figure 3

**Step #4- See Figure 4**

Liberal apply SL-100 sealant to flange faces. Install the gasket on each mounting flange face and around the studs. Apply SL-100 sealant on top of each gasket. Mount the sump on the mounting flange/flanges. **Note: Before entering the sump to tighten the mounting flange nuts, or to install UST equipment, make sure the bottom of the sump is adequately supported at all times with backfill.**

**Step #5- See Figure 5A/5B**

Enter sump. Install compression ring, washers, lock washers, and nuts. Using a 3/4" nut driver, tighten all of the nuts evenly and firmly. Do not over tighten.

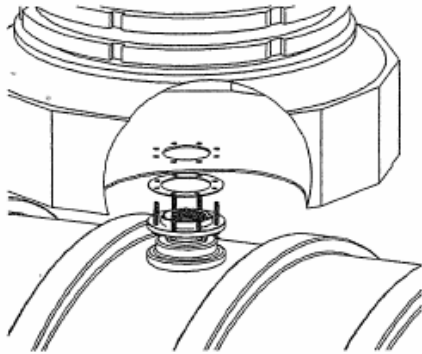


Figure 4

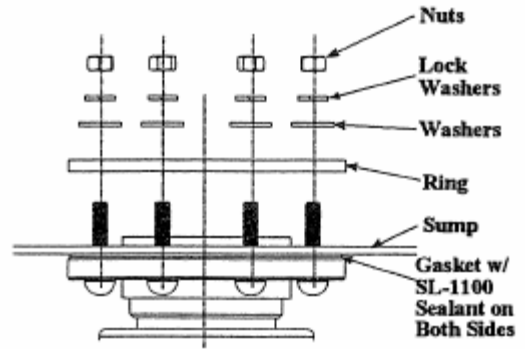


Figure 5A

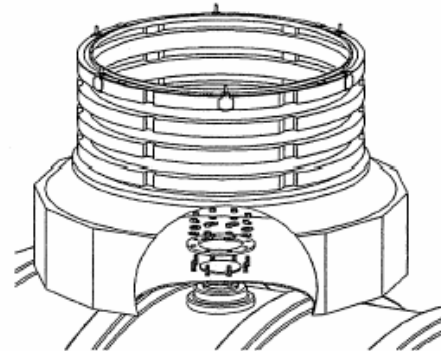


Figure 5B

**Notice:** FlexWorks products must be used in compliance with applicable federal, state, and local laws and regulations. Product selection should be based on physical specifications and limitations and compatibility with the environment and material to be handled. OPW makes no warranty of fitness for a particular use. All illustrations and specifications in this literature are based on the latest production information available at the time of publication. Prices, materials, and specifications are subject to change at any time, and models may be discontinued at any time, in either case, without notice or obligation.

**Product Warranty**

OPW warrants that products sold by it are free from defects in materials and workmanship for a period of one year from the date of shipment by OPW. As the exclusive remedy under this limited warranty, FlexWorks by OPW, Inc., will at its sole discretion, repair, replace, or issue credit for future orders for any product that may prove defective within the one year period. This warranty shall not apply to any product that has been altered in any way, which has been repaired by any party other than a service representative authorized by OPW or when failure is due to misuse, conditions of use, or improper installation or maintenance. Neither OPW Fueling Containment Systems nor OPW shall in any instance have any liability whatsoever for special, incidental or consequential damages to any party and shall have no liability for the cost of labor, freight, excavation, clean up, downtime, removal, reinstallation, loss of profit, or any other cost or charges in excess of the amount of the original invoice for the products.

THIS WARRANTY IS IN LIEU OF ALL OTHER WARRANTIES, EXPRESS OR IMPLIED, AND SPECIFICALLY THE WARRANTIES OF MERCHANTABILITY AND FITNESS FOR A PARTICULAR PURPOSE. THERE ARE NO WARRANTIES WHICH EXTEND BEYOND THE DESCRIPTION ON THE FACE HEREOF.

**IMPORTANT INFORMATION - FOLLOW ALL INSTRUCTIONS**

Please contact your OPW-FCS sales representative or OPW-FCS customer service representative at 1-800-422-2525 for OPW-FCS products installation procedures. All OPW-FCS literature including installation instruction sheets and manuals can be accessed from the OPW-FCS website at: [www.opwfcs.com](http://www.opwfcs.com).



OPW Fueling Containment Systems  
3250 US 70 Business West  
Smithfield, NC 27577  
Customer Service: (800)-422-2525  
Customer Service Fax: (800)-421-3297  
Technical Questions: (919)-934-2786  
Literature Requests: (919) 934-2786  
[www.opwfcs.com](http://www.opwfcs.com)

