



Grade Level Spill Containment Manholes

Installation Instructions

705 - 5 Gallon 715 - 15 Gallon 725 - 25 Gallon



Manual #	Revision	Date	Changes from Previous Revision
F-1307	7	Mar. 2012	Removed reference to pipe sealant brand

Warning

Application and use of this product should be in compliance with local, state, and federal regulations. Selection of this product should be based on physical specifications, limitations, and compatibility with the environment and material to be handled. EBW makes no warranty of fitness for a particular use.

Part No.	Size	Base	Covers	Drain	Replacement Drain Valve Kit	Fig.
705-458-01	5 Gal.	Cast Iron	Raintight	No Drain	90022	B
705-470-01	5 Gal.	Cast Iron	Raintight	Pull to Push	705-332-19	B
705-470-21	5 Gal.	Cast Iron	Raintight	Pull to Push	705-332-19	B
705-471-01	5 Gal.	Composite	Raintight	Pull to Push	705-332-19	B
705-471-21	5 Gal.	Composite	Raintight	Pull to Push	705-332-19	B
705-472-01	5 Gal.	Cast Iron	Snap-on	Pull to Push	705-332-19	B
705-472-65	5 Gal.	Cast Iron	Snap-on	Pull to Push	705-332-19	B
705-473-01	5 Gal.	Composite	Snap-on	Pull to Push	705-337-01	B
705-473-65	5 Gal.	Composite	Snap-on	Pull to Push	705-332-19	B
705-478-EX	15 Gal.	Composite	Raintight	Pull to Push	705-332-19	C
715-470-01	15 Gal.	Cast Iron	Raintight	Pull to Push	705-332-19	C
715-471-01	15 Gal.	Composite	Raintight	Pull to Push	705-332-19	C
715-472-01	15 Gal.	Cast Iron	Snap-on	Pull to Push	705-332-19	C
715-472-65	15 Gal.	Cast Iron	Snap-on	Pull to Push	705-332-19	C
715-473-01	15 Gal.	Composite	Snap-on	Pull to Push	705-332-19	C
715-473-65	15 Gal.	Composite	Snap-on	Pull to Push	705-332-19	C
725-425-555	25 Gal.	Cast Iron	Raintight	Automatic	702-120-01	D
725-470-01	25 Gal.	Cast Iron	Raintight	Pull to Push	705-332-19	D
725-471-01	25 Gal.	Composite	Raintight	Pull to Push	705-332-19	D
725-472-01	25 Gal.	Cast Iron	Snap-on	Pull to Push	705-332-19	D
725-472-65	25 Gal.	Cast Iron	Snap-on	Pull to Push	705-332-19	D
725-473-01	25 Gal.	Composite	Snap-on	Pull to Push	705-332-19	D
725-473-65	25 Gal.	Composite	Snap-on	Pull to Push	705-332-19	D

ARB approved EVR components listed on page 7.

The following items may be ordered separately: Test Drain Kit (no drain) #90022 for models with pull to push drains and push drains.

Replacement Drain Valves for Models with Pull Drains

705-336-01	(5 Gal.)	B.G. & G.L.
705-336-02	(15 Gal.)	B.G. & G.L.
705-336-03	(25 Gal.)	B.G.
705-336-04	(25 Gal.)	G.L.

Conversion drain valve kit for models with push drains, order conversion kit 705-332-99.

EBW makes no expressed or implied warranty with regard to this guide's contents. EBW assumes no liability for errors or omissions, or for any damages, direct or consequential, that result from the use of this document or the equipment which it describes. This document contains proprietary information and is protected by copyright. All rights are reserved. No part of this document may be reproduced in any form without the prior written consent of EBW. EBW reserves the right to change this document at any time without notice.

Grade Level Spill Containment Manholes

705, 715, 725-GL (5,15, & 25 Gallon)

Installation Instructions

Before installing a spill container, coat all of the riser pipe threads with a thread sealant that is compatible with the product in that tank.

Install the spill container by threading it onto the tank riser pipe until it is hand tight. Do not use the upper cast iron ring to fully tighten the container. Tightening the tank using the upper cast iron ring can cause undue stress to the entire unit.

After hand tightening, place a torque wrench assembly around the lower portion of the tank base and torque the spill bucket base on a riser pipe to 60 - 90 ft. lbs. torque using an EBW chain wrench (part #901-101-01) and a torque wrench with at least 100 ft. lbs. of torque range (due to an offset of chain and torque wrenches, actual torque wrench values will be 45 - 70 ft. lbs.). After an initial torque value is obtained, continue to thread the tank base onto the riser pipe until the drain valve is orientated to the riser low spot.

Note: All of the tank risers have some out-of-plumb characteristics due to slight tank tilts and rolls. To properly drain, the drain valve must be located at the low spot of the riser tilt. The riser low spot is the direction the riser pipe is leaning towards. This is easily obtained by placing a small amount of water in the bucket base and turning the bucket until the water runs to the drain valve.

If space is limited (i.e. a retrofit installation to a sawed out section of concrete):

- 1) Make sure that the inside riser pipe is removed.
- 2) Locate the fitting that the inside riser pipe threads into.
- 3) Coming down through the top of the unit, use a special socket wrench on the octagonal surface of the fitting to finish tightening it. Do not disassemble the unit.
 - The top edge of the rim must be positioned a minimum of 2" above the driveway level to provide an adequate slope for drainage.
 - Before pouring cement, place duct tape around the rim, this will keep the cement out of the drainage grooves when the lid is in place. See figure A. After cement has solidified, remove any duct tape or excess cement.

Note: If you want to seal off a drain to test your unit, install a test drain kit (part #90022-01).

Check For Leaks

Every unit should be tested for leaks prior to, and after, pouring concrete. If this model comes with a drain, close it. If not, install a 90022-01 test drain kit. Fill the unit completely with water. If the test water level drops at all within one hour, then a leak exists (this is not an EVR test).

Check to see that the drain valve is seated properly. If not, then PULL the drain valve several times on a PULL TO PUSH DRAIN UNIT. Replace the valve if it continues to leak.

If the unit continues to leak, the entire spill container must be removed from the riser pipe and replaced with another. RE-TEST.

After backfilling the area with pea gravel and pouring concrete, RE-TEST to make sure that no damage occurred during installation.

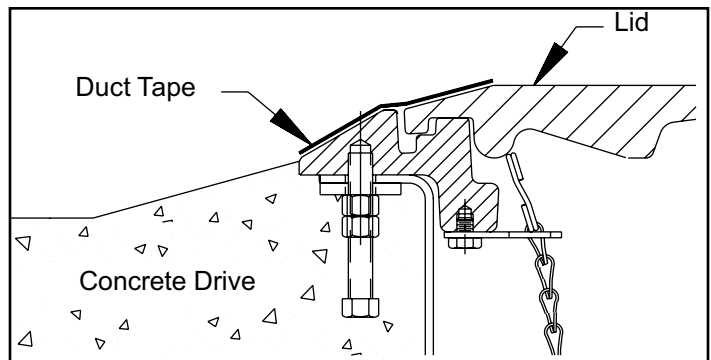
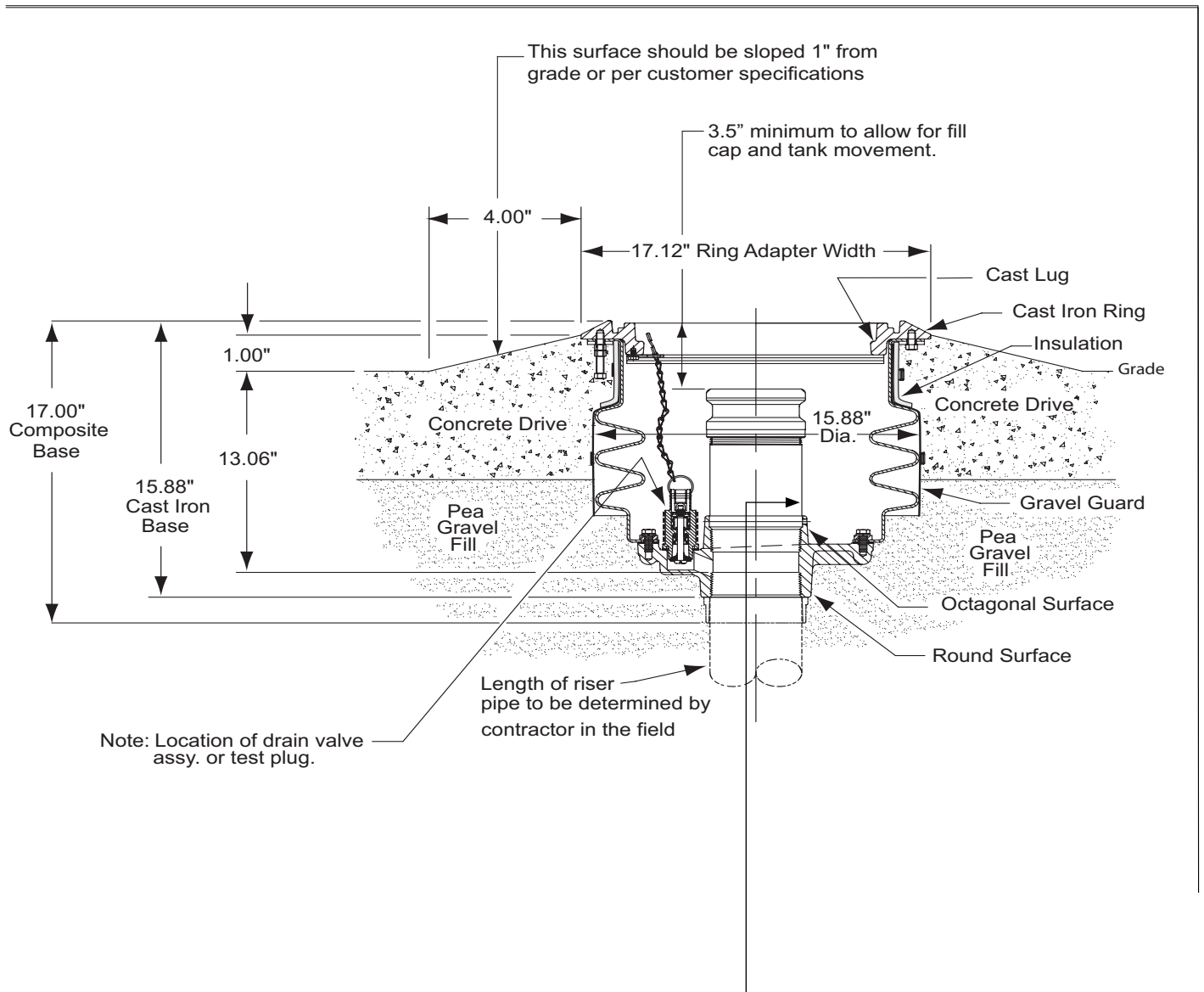


Figure A: Protect drainage grooves

5 Gallon Spill Containers

Figure B: 5-Gallon Installation



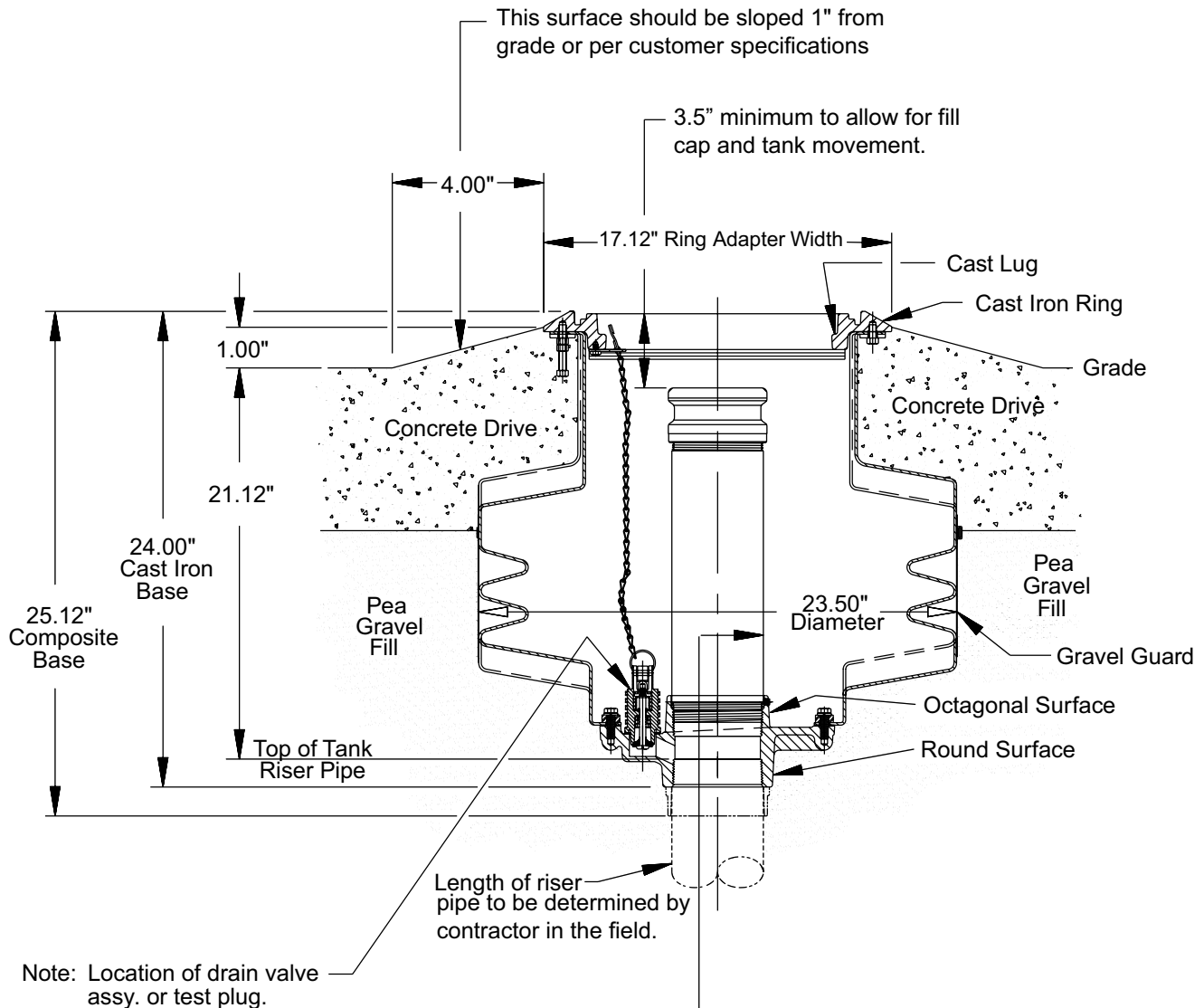
Recommended Inside Riser Pipe Lengths for 5 Gallon Spill Containers

- 5" - For conventional top and side seal adaptors (EBW 776 & 778)
- 4" - For swivel type product adaptors and conventional coaxial adaptors (EBW 778 & 306)
- 3" - For swivel type poppeted vapor adaptors and self-sealing coaxial poppeted adaptors (EBW 300 & 306 CA)

The above figures may contain components (including part numbers) that have not been certified by the California Air Resources Board (CARB) for a specific Phase I Vapor Recovery System. Please refer to Exhibit 1 of the appropriate CARB Phase I Executive Order for a list of Phase I Vapor Recovery System Equipment.

15 Gallon Spill Containers

Figure C: 15 Gallon Installation

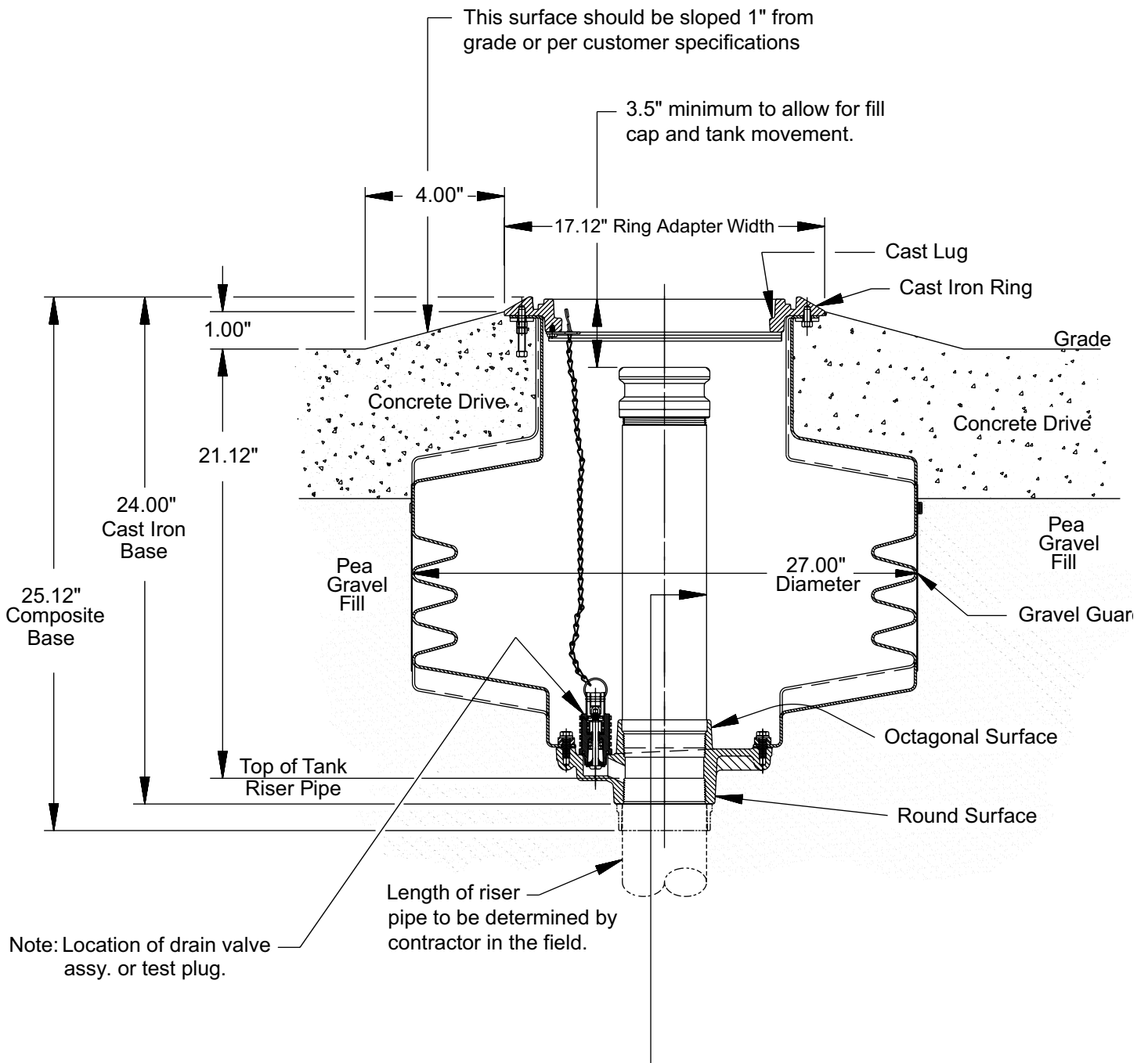


Recommended Inside Riser Pipe Lengths for 15 Gallon Spill Containers	
12 1/4"	- For conventional top and side seal adaptors (EBW 776 & 778)
11 1/4"	- For swivel type product adaptors and conventional coaxial adaptors (EBW 778 & 306)
10 1/4"	- For swivel type poppeted vapor adaptors and self-sealing coaxial poppeted adaptors (EBW 300 & 306 CA)

The above figures may contain components (including part numbers) that have not been certified by the California Air Resources Board (CARB) for a specific Phase I Vapor Recovery System. Please refer to Exhibit 1 of the appropriate CARB Phase I Executive Order for a list of Phase I Vapor Recovery System Equipment.

25 Gallon Spill Containers

Figure D: 25 Gallon Installation



Recommended Inside Riser Pipe Lengths for 25 Gallon Spill Containers	
16"	- For conventional top and side seal adaptors (EBW 776 & 778)
15"	- For swivel type product adaptors and conventional coaxial adaptors (EBW 778 & 306)
14"	- For swivel type popped vapor adaptors and self-sealing coaxial popped adaptors (EBW 300 & 306 CA)

The above figures may contain components (including part numbers) that have not been certified by the California Air Resources Board (CARB) for a specific Phase I Vapor Recovery System. Please refer to Exhibit 1 of the appropriate CARB Phase I Executive Order for a list of Phase I Vapor Recovery System Equipment.

C.A.R.B. Approved Below Grade Spill Containers

Part No.	Size	Base	Covers	Drain	Replacement Drain Valve Kit	Fig.
705-490-01	5 Gal.	Cast Iron	Raintight	Pull to Push	705-337-19	B
705-490-02	5 Gal.	Cast Iron	Raintight	No Drain		B
705-490-03	5 Gal.	Cast Iron	Watertight	Pull to Push	705-337-19	B
705-490-04	5 Gal.	Cast Iron	Watertight	No Drain		B
705-491-01	5 Gal.	Composite	Raintight	Pull to Push	705-337-19	B
705-491-02	5 Gal.	Composite	Raintight	No Drain		B
705-491-03	5 Gal.	Composite	Watertight	Pull to Push	705-337-19	B
705-491-04	5 Gal.	Composite	Watertight	No Drain		B
715-490-01	15 Gal.	Cast Iron	Raintight	Pull to Push	705-337-19	C
715-490-02	15 Gal.	Cast Iron	Raintight	No Drain		C
715-490-03	15 Gal.	Cast Iron	Watertight	Pull to Push	705-337-19	C
715-490-04	15 Gal.	Cast Iron	Watertight	No Drain		C
715-491-01	15 Gal.	Composite	Raintight	Pull to Push	705-337-19	C
715-491-02	15 Gal.	Composite	Raintight	No Drain		C
715-491-03	15 Gal.	Composite	Watertight	Pull to Push	705-337-19	C
715-491-04	15 Gal.	Composite	Watertight	No Drain		C
725-490-01	25 Gal.	Cast Iron	Raintight	Pull to Push	705-337-19	D
725-490-02	25 Gal.	Cast Iron	Raintight	No Drain		D
725-490-03	25 Gal.	Cast Iron	Watertight	Pull to Push	705-337-19	D
725-490-04	25 Gal.	Cast Iron	Watertight	No Drain		D
725-491-01	25 Gal.	Composite	Raintight	Pull to Push	705-337-19	D
725-491-02	25 Gal.	Composite	Raintight	No Drain		D
725-491-03	25 Gal.	Composite	Watertight	Pull to Push	705-337-19	D
725-491-04	25 Gal.	Composite	Watertight	No Drain		D

Monthly Recommended Maintenance & Inspection Procedures

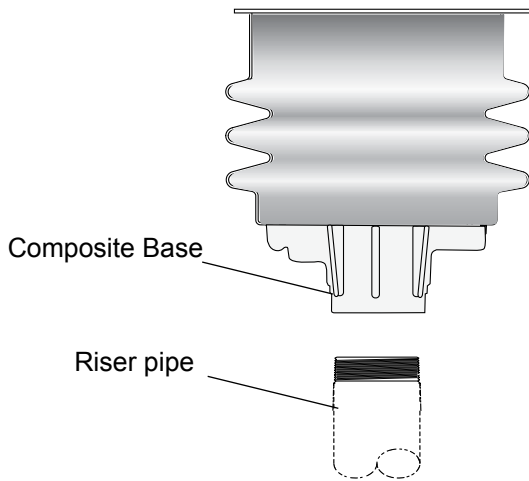
1. Clean/Remove any buildup of sand, gravel, or dirt from the manhole top cast flange. Buildup of material will prevent the manhole lid from sitting flat and diverting rain water. In addition to water infiltration, this can lead to premature lid failures and tripping hazards.
2. Inspect the spill container latching mechanism and make sure that it is operating properly.
3. Inspect the hinged cover gasket and replace it if necessary.
4. Inspect the spill container for the presence of liquid. If any is present, identify the material (water or fuel) and dispose of it using your preferred acceptable method (pump it out or drain it into the tank).
5. Inspect the spill container and the drain valve screen for any foreign material collecting in the bottom of the tank. Remove any large objects (leaves, rags, etc.) and wipe the bottom of the tank with a disposable rag.
6. Inspect the tank riser adapter and the dust cap for obvious damage. Verify that the gasket is in the dust cap and that the dust cap still securely latches onto the adapter.

Post Installation Inspection Procedure

After installing these spill containers, but prior to backfilling the excavation, EBW recommends that the tank system be checked for potential leaks. In CA, utilize TP-201.3, Static Pressure Test Procedure. In other areas, utilize this or a locally approved/accepted pressure test procedure. Should a leak be present, test the following with an acceptable leak check fluid: the tank and spill container piping joints, the drain valve poppet and gasket, the permanent drain blank plate gasket, and the adapter piping joint. Repair all of the leaks prior to backfilling.

Composite Base Spill Containment Installation Instructions

1. Before installing a spill containment manhole, apply PTFE thread sealant tape clockwise around the riser pipe threads.
2. Align the composite base on the riser pipe as shown in Figure E.
3. Rotate the spill containment counter clockwise until the threads mesh (you can feel the unit drop into place), then rotate it clockwise until it is handtight.




Caution  Do not use the upper cast iron ring to fully tighten the spill containment tank. Tightening the tank using the upper cast iron ring can cause undue stress to the entire unit.

Figure E

4. To finish tightening, refer to Figure F and check p. 3 for torque specifications.
5. Continue with the standard instructions for setting the top rim to driveway grade level.

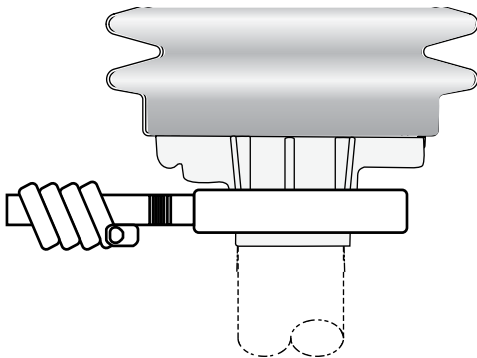


Figure F



Franklin Fueling Systems

3760 Marsh Road • Madison, WI 53718 U.S.A.

Tel: +1 608 838 8786 • Fax: +1 608 838 6433 • www.franklinfueling.com

Tel: USA & Canada 1 800 225 9787 • Tel: Mexico 001 800 738 7610