



Description

OMNTEC's LU and LPD leak-detection and overflow-alarm systems provide continuous, accurate monitoring in a variety of applications. Typical applications are reservoirs, sumps, dry interstitial spaces and dispenser pans. These easy-to-install controllers alarm for in tank levels and leak conditions. The LU controllers are capable of accepting up to 9 sensors for high level and leak detection. The LPD controllers are capable of accepting up to 9 sensors for in tank levels and product distinguishing leak detection. The electro-optic sensors used with these controllers allow users to easily cycle all sensors through a simulated leak, with the press of a single button. This feature eliminates the need to remove the sensor from its location.

An alarm condition is visually signaled by a dedicated LED indicator, which remains lit until the alarm condition is corrected. Alarm conditions are audibly annunciated via a 95-decibel piezoelectric pulsing horn. RA-series remote annunciators add high-level remote audio-visual alarms without the need for external AC power.

The LU-SP series controllers accommodate a variety of special applications. In addition, LU-OW systems are available for use with Oil Water Separators.

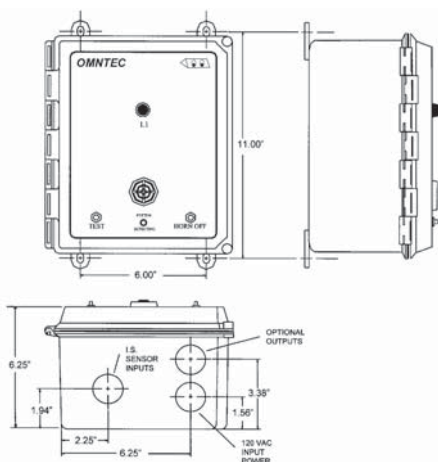
The NEMA 4X rating of the LU and LPD series controllers indicates a weatherproof, corrosion-resistant product. These controllers are ruggedly constructed to provide reliable and cost-effective performance.

Features

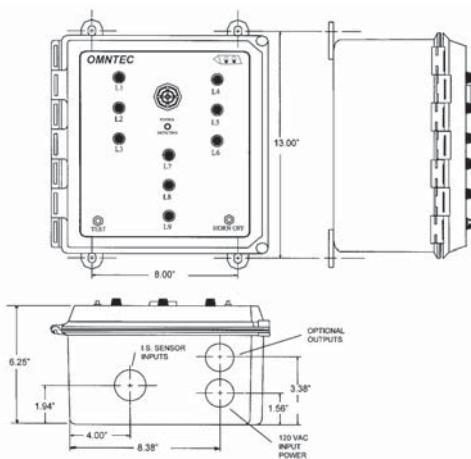
- NEMA 4X weatherproof, corrosion-resistant
- Remote sensor testing
- Acknowledge switch
- Test switch
- System detect light
- Easily installed
- Low-voltage remote annunciator outputs
- Relay outputs (See Specifications)
- LED indicators rated MTBF 11 years
- Specific sensor LED
- Inputs accept either high level, caution level or leak sensors
- Low level alarm (LPD controllers only)
- Distinguishes liquid hydrocarbons from water (LPD controllers only)
- Removable sensor input connectors
- U.L. listed
- Third-party certified
- Cost effective
- Modified controllers for special applications

LU1

LU2, LU3, LU4, LU6 and L1PD2 dimensions are same as LU1

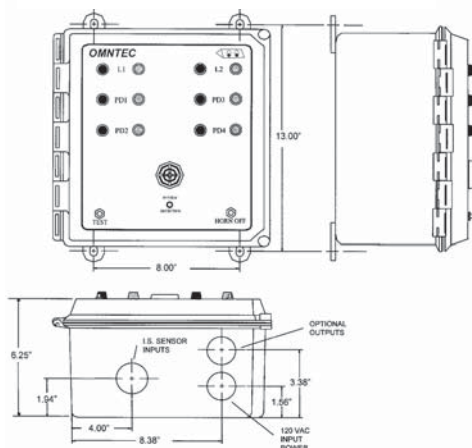


LU9



L2PD4

L3PD6 dimensions are same as L2PD4



Note: Current published specifications are subject to change without notification.

Verify specifications with manufacturer.

For additional information consult factory or pricelist.

Specifications

Enclosure:	NEMA 4X	
Power Input:	85-125 VAC, 47-440 Hz 16 watts maximum	
Power to Sensor:	2 VDC @ 13 mA Intrinsically safe for Class I, Group D hazardous locations	
Sensor Cable:	Shielded 22 AWG with drain wire (OMNTEC EC-4 or EC-12) Maximum length 2,000 feet	
Audio-visual Controls:		
Audible alarm:	95 dB pulsing horn	
Red lights:	High level alarm (L-Series) Liquid-leak alarm (LWF and LS-ASC)	
Amber Light:	Low level alarm (L-Series) Water-leak alarm (PD-Series)	
Green light:	Power is on (system detecting)	
Horn-off button:	Silences horn (auto time-out also included)	
Test button:	Tests entire system electronics, from sensors to control panel	
Response Time:	Immediate	
Relay Outputs:	SPST normally open dry contact 0.5 amp, 120 AC Switches when an alarm condition occurs (1 per sensor up to LU3)	
Low-voltage Outputs:	12 VDC	
Operating Temperature:	0 to 140° F	
Compatible Sensors*:	L-1-Series	For high liquid level
(see sensor chart)	L-2-Series	For high liquid level and caution level or high liquid level and low liquid level
	LS-ASC	For liquid-leak detection in both under- ground and aboveground applications For double-wall dry interstice of Xerxes 4-foot fiberglass tanks
	LWF	For double-wall fiberglass dry interstice
	PDS	For product distinguishing liquid-leak detection
	PDWF	For double-wall fiberglass dry interstice
	PDWS	For double-wall steel dry interstice
* Additional sensor applications available with SP and OW controllers		
Accessories:	RA-1* RA-2* RA-3* RA-4* RA-NYS	
* Number denotes number of tanks or alarms		
Weight:	LU1 - 5 lb. LU2 - 6 lb. LU3 - 6 lb. LU4 - 6 lb. LU6 - 6 lb. LU9 - 9 lb.	L1PD2 - 6 lb. L2PD4 - 9 lb. L3PD6 - 9 lb.
Approvals:	U.L. listed 5L04 Third-party certified	

For technical information:

OMNTEC®

OMNTEC Mfg., Inc.

1993 Pond Road

Ronkonkoma, New York 11779

Phone: 631-981-2001

Fax: 631-981-2007

Email: omntec@omntec.com

Web Site: www.omntec.com

Doc. 900107 rev1-0 Rev Date: 10-16-2012